

## Valve Driver Assembly

Description	HP Part No.	Qty.
1. Valve Driver Bracket	G1580-00070	1
2. Captured Screw, M4 x 12 mm, Torx T20	1390-1023	2
3. Valve Driver Wiring Harness	G1530-60660	1
4. Pneumatic Tubing, 1/8 in. OD, Teflon	0890-0746	8
5. Adapter Fitting, 10/32 x 1/16 in. Hose Barb	0100-1205	8
6. Standoff (included with valves)	—	8
7. 4-way Solenoid Valves	G1580-61090	4
8. O-Ring (w/Valves and End Plate Kit)	—	10
9. Solenoid Valve End Plate Kit	05890-61097	1
10. Screw, Skt Hd Cap	0515-1214	2
11. Elbow Fitting, 1/4 in., Male	0100-1632	2
12. Exhaust Tubing, 1/4 in. OD, 120 in.	0890-1489	1

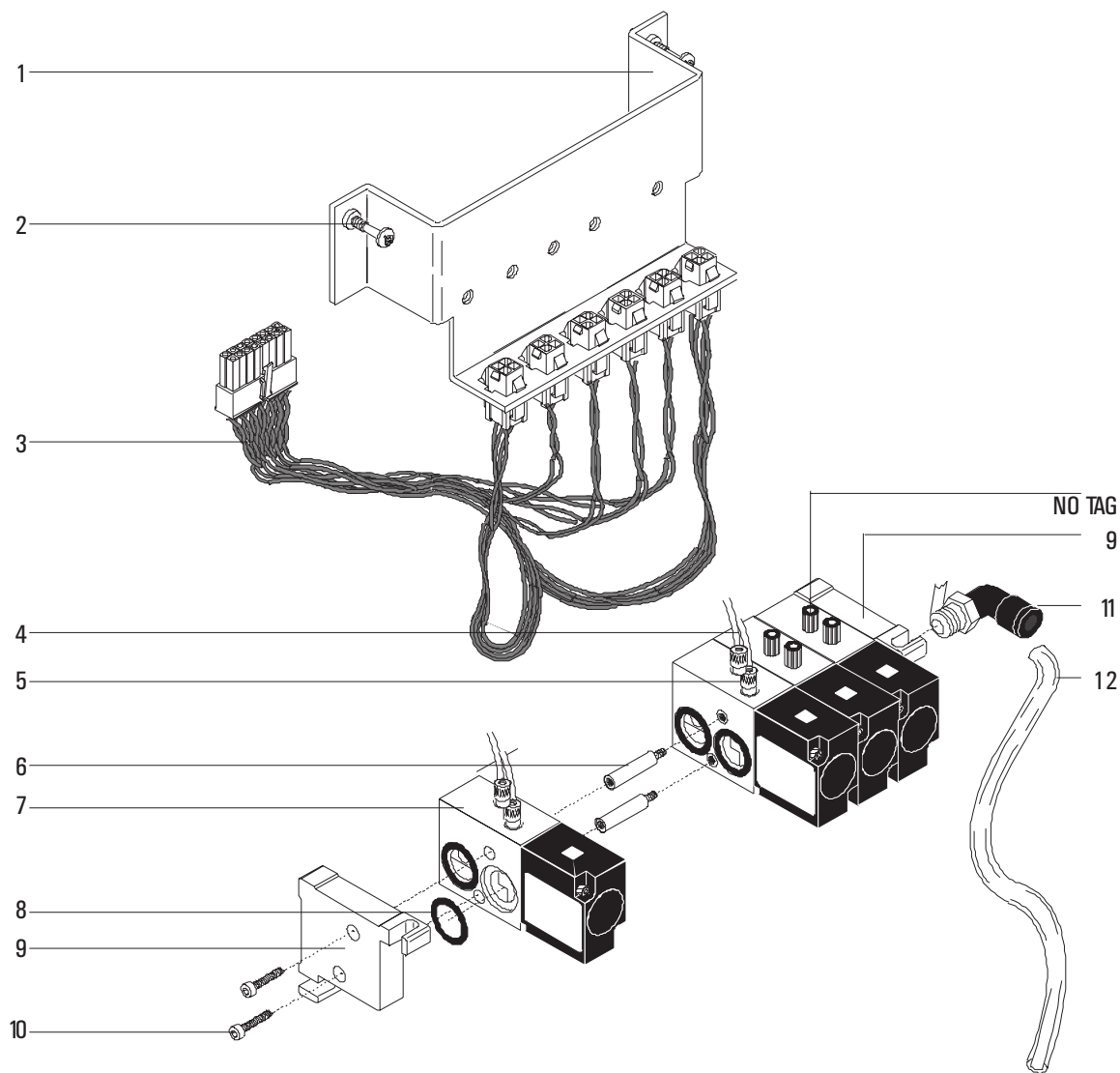


Figure 1350-2 Valve Driver Assembly